

## MIGRATION PROFILES

### Part I. Global legal instruments related to international migration

#### States parties to United Nations legal instruments

**Year ratified:**

1966	1949 ILO Migration for Employment Convention
-	1951 Refugee Convention
-	1967 Refugee Protocol
-	1975 ILO Migrant Workers Convention

**Year ratified:**

1991	1989 Conv. on the Rights of the Child
2010	1990 UN Migrant Workers Convention
2004	2000 Human Trafficking Protocol
2008	2000 Migrant Smuggling Protocol

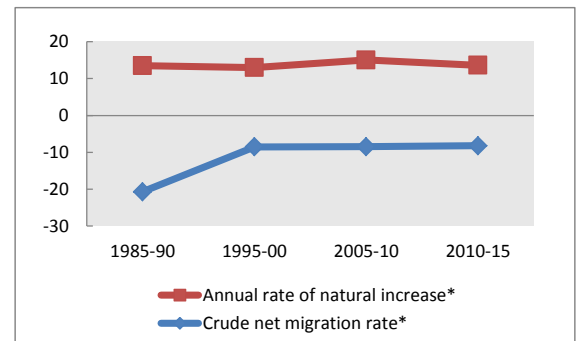
### Part II. Population indicators

#### Population estimates

	1990	2000	2010	2013
Males ('000)	356	372	399	406
Females ('000)	369	372	387	393
Total ('000)	725	744	786	800
Percentage urban population	30	29	28	29
Percentage rural population	70	71	72	71

	1985-90	1995-00	2005-10	2010-15
Average annual rate of change	-0.72	0.44	0.65	0.54
Annual rate of natural increase*	13.47	12.95	15.01	13.62
Crude net migration rate*	-20.70	-8.51	-8.47	-8.23
Total net migration ('000)	-76	-31	-33	-33

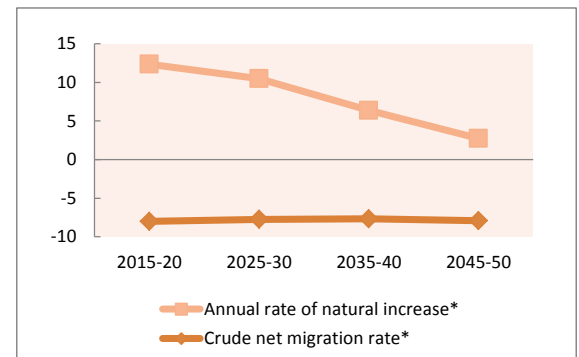
\* Per 1,000 population



#### Projected change in total population by component (x 1000)

	2015-20	2025-30	2035-40	2045-50
Total population at end of period	825	853	851	815
Population change during period	18	12	-6	-22
Annual rate of natural increase*	12.34	10.48	6.36	2.71
Crude net migration rate*	-8.02	-7.73	-7.67	-7.93

\* Per 1,000 population



#### Projected change in working-age (15-64) population (x 1000)

	2015-20	2025-30	2035-40	2045-50
Medium variant	46	2	-8	-11
Zero-migration variant	75	34	27	23
Difference	-28	-32	-36	-33

### Part III. Development indicators

#### Development indicators (years are approximate for some indicators / countries)

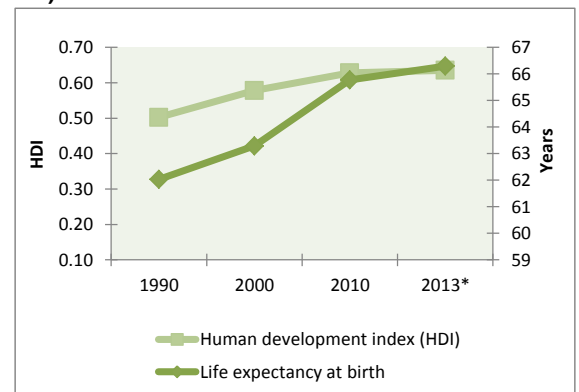
	1990	2000	2010	2013*
Life expectancy at birth	62.0	63.3	65.8	66.3
Adult literacy rate (ages 15 and older)	..	..	85.0	..
Combined gross enrolment ratio in education (per cent)	65.8	72.9	69.2	70.4
GDP per capita (PPP in thousands of US dollars)	1 129	2 177	2 977	3 399
Human development index (HDI)	0.50	0.58	0.63	0.64

\* 2013 or latest available

#### Remittances (years are approximate for some indicators / countries)

	1990	2000	2010	2012*
Inflows (millions of US dollars)	..	27	373	397
Outflows (millions of US dollars)	..	27	133	133
Inflows as a share of GDP (%)	..	3.8	16.5	13.9

\* Estimate



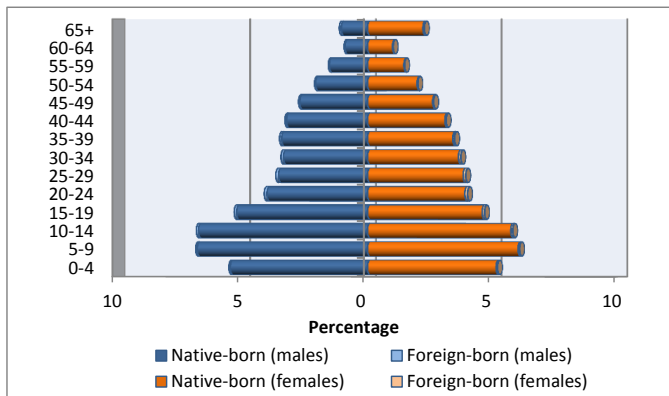
# Guyana

## Part IV. International migrant stocks

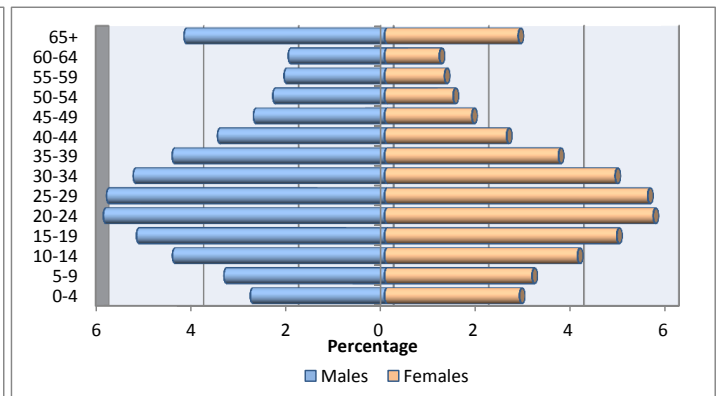
### International migrant stock by age and sex

	1990			2000			2013		
	Male	Female	Total	Male	Female	Total	Male	Female	Total
0-4	185	209	394	230	247	477	417	419	836
5-9	248	259	507	309	305	614	499	458	957
10-14	224	217	441	409	378	787	659	599	1 258
15-19	111	113	224	499	487	986	771	721	1 492
20-24	101	113	214	483	515	998	874	834	1 708
25-29	116	125	241	412	428	840	864	817	1 681
30-34	134	121	255	346	300	646	781	716	1 497
35-39	144	111	255	264	197	461	660	540	1 200
40-44	141	100	241	207	141	348	519	379	898
45-49	126	85	211	189	125	314	407	271	678
50-54	115	74	189	182	113	295	347	213	560
55-59	113	67	180	175	101	276	312	186	498
60-64	125	77	202	169	100	269	299	170	469
65+	317	224	541	396	266	662	623	415	1 038
<b>Total</b>	<b>2 200</b>	<b>1 895</b>	<b>4 095</b>	<b>4 270</b>	<b>3 703</b>	<b>7 973</b>	<b>8 032</b>	<b>6 738</b>	<b>14 770</b>

Total population by age and sex, 2013



Migrant stock by age and sex, 2013



### Migrant stock by origin (2013)

Top 5 countries or areas of origin	Total
Suriname	4 662
Brazil	2 166
Venezuela (Bolivarian Republic of)	2 132
United States of America	1 273
China	1 166
<b>Total</b>	<b>11 399</b>

### Migrant stock by destination (2013)

Top 5 countries or areas of destination	Total
United States of America	281 371
Canada	101 004
United Kingdom of Great Britain and Northern Ireland	21 073
Suriname	11 530
Venezuela (Bolivarian Republic of)	7 401
<b>Total</b>	<b>422 379</b>

### Refugee population by origin (end 2012)

Top 5 countries or areas of origin	Total
<b>Total</b>	

### Refugee population by destination (end 2012)

Top 5 countries or areas of destination	Total
<b>Total</b>	

### Tertiary students by origin (2013)

Top 5 countries or areas of origin	Total
<b>Total</b>	

### Tertiary students by destination (2013)

Top 5 countries or areas of destination	Total
Cuba	867
United States of America	267
United Kingdom of Great Britain and Northern Ireland	66
France	51
Barbados	48
<b>Total</b>	<b>1 299</b>

## DEFINITIONS AND SOURCES

**States parties to United Nations legal instruments** : Indicates whether a country has ratified the relevant international instrument and if so, the year of ratification. The relevant instruments are the 1951 Convention relating to the Status of Refugees; the 1967 Protocol relating to the Status of Refugees, and the 1990 International Convention on the Protection of the Rights of All Migrant Workers and Members of their Families. In addition, two Protocols relevant to international migration supplement the United Nations Convention against Transnational Organized Crime, namely the 2000 Protocol to Prevent, Suppress and Punish Trafficking in Persons, Especially Women and Children and the 2000 Protocol against the Smuggling of Migrants by Land, Sea and Air. **Source** : United Nations Treaty Collection. See: <http://treaties.un.org>.

**Males**: De facto male population as of 1 July of the year indicated. Data are presented in thousands. **Source**: United Nations, Department of Economic and Social Affairs, Population Division (2013). World Population Prospects: The 2012 Revision.

**Females**: De facto female population as of 1 July of the year indicated. Data are presented in thousands. **Source**: United Nations, Department of Economic and Social Affairs, Population Division (2013). World Population Prospects: The 2012 Revision.

**Total population**: De facto population in a country, area or region as of 1 July of the year indicated. Figures are presented in thousands. **Source**: United Nations, Department of Economic and Social Affairs, Population Division (2013). World Population Prospects: The 2012 Revision.

**Percentage urban population**: Urban population as a percentage of the total population. **Source**: United Nations, Department of Economic and Social Affairs, Population Division (2012). World Urbanization Prospects: The 2011 Revision.

**Percentage rural population**: Rural population as a percentage of the total population. **Source**: United Nations, Department of Economic and Social Affairs, Population Division (2012). World Urbanization Prospects: The 2011 Revision.

**Annual rate of change**: Average exponential rate of growth of the population over a given period. It is expressed as a percentage. **Source**: United Nations, Department of Economic and Social Affairs, Population Division (2013). World Population Prospects: The 2012 Revision.

**Annual rate of natural increase**: Crude birth rate minus the crude death rate. Represents the portion of population growth (or decline) determined exclusively by births and deaths. **Source**: United Nations, Department of Economic and Social Affairs, Population Division (2013). World Population Prospects: The 2012 Revision.

**Crude net migration rate**: The ratio of net migration during the year to the average population in that year. The value is expressed per 1 000 inhabitants. **Source**: United Nations, Department of Economic and Social Affairs, Population Division (2013). World Population Prospects: The 2012 Revision.

**Total net migration**: Net number of migrants, that is, the number of immigrants minus the number of emigrants. It is expressed in thousands. **Source**: United Nations, Department of Economic and Social Affairs, Population Division (2013). World Population Prospects: The 2012 Revision.

**Total population at end of period**: Total population on 30 June of the final year of the period. Data are from the medium variant (see below) of the World Population Prospects. **Source**: United Nations, Department of Economic and Social Affairs, Population Division (2013). World Population Prospects: The 2012 Revision.

**Population change during period**: Total population change over a period, that is, the difference between the population at the end of the period and that at the beginning of the period. **Source**: United Nations, Department of Economic and Social Affairs, Population Division (2013). World Population Prospects: The 2012 Revision.

**Medium variant**: The medium projection variant combines the medium fertility assumption together with normal-mortality and normal international migration assumptions and is a central reference for trends over the longer term that results from the probabilistic approach that simulates future fertility paths for each country. **Source**: United Nations, Department of Economic and Social Affairs, Population Division (2013). World Population Prospects: The 2012 Revision.

**Zero-migration variant**: Under this assumption, the medium variant is modified so that international migration for each country is set to zero starting in 2010-2015. **Source**: United Nations, Department of Economic and Social Affairs, Population Division (2013). World Population Prospects: The 2012 Revision.

**Life expectancy at birth**: Number of years a newborn infant could expect to live if prevailing patterns of age-specific mortality rates at the time of birth stay the same throughout the infant's life. **Source**: United Nations, Department of Economic and Social Affairs, Population Division (2013). World Population Prospects: The 2012 Revision.

**Adult literacy rate**: The percentage of population aged 15 years and older who can both read and write with understanding a short simple statement on his/her everyday life. Generally, 'literacy' also encompasses 'numeracy', the ability to make simple arithmetic calculations. **Source**: United Nations Educational, Scientific and Cultural Organization. Institute for Statistics (2012). <http://stats.uis.unesco.org>

**Combined gross enrolment ratio in education**: Total enrolment in a specific level of education, regardless of age, expressed as a percentage of the eligible official school-age population corresponding to the same level of education in a given school year. For the tertiary level, the population used is that of the five-year age group following on from the secondary school leaving. **Source**: United Nations Educational, Scientific and Cultural Organization. Institute for Statistics (2012). <http://stats.uis.unesco.org>

**GDP per capita (PPP in USD)**: Gross domestic product converted to international dollars using purchasing power parity rates. An international dollar has the same purchasing power over GDP as the U.S. dollar has in the United States. GDP at purchaser's prices is the sum of gross value added by all resident producers in the economy plus any product taxes and minus any subsidies not included in the value of the products. It is calculated without making deductions for depreciation of fabricated assets or for depletion and degradation of natural resources. Data are in current international dollars. **Source**: World Development Indicators - World Bank (2013).



**Human development index (HDI):** A composite measure of achievements in three basic dimensions of human development—a long and healthy life, access to education and a decent standard of living. For ease of comparability, the average value of achievements in these three dimensions is put on a scale of 0 to 1, where greater is better, and these indicators are aggregated using geometric means. **Source:** United Nations Development Program (2013). Human Development Report Office.

**Remittances:** Remittances are defined as the sum of workers' remittances, compensation of employees, and migrants' transfers. Regional aggregates were calculated by the United Nations Population Division. All data are reported in current U.S. dollars. Remittance **inflows** refer to the sum of workers' remittances, compensation of employees and migrants' transfers received by the country of enumeration, while **outflows** refer to remittance outflows by the country of enumeration. **Source:** World Bank staff calculation based on data from IMF Balance of Payments Statistics Yearbook 2012 and data releases from central banks, national statistical agencies, and World Bank country desks.

**Remittance inflows as share of GDP:** **Source:** World Bank staff calculation based on data from IMF Balance of Payments Statistics Yearbook 2012 and data releases from central banks, national statistical agencies, and World Bank country desks.

**International migrant stock by age and sex:** The mid-year (1 July) estimate of the number of people living in a country or area other than that in which they were born. If the number of foreign-born was not available, the estimate refers to the number of people living in a country other than that of their citizenship. **Source:** United Nations, Department of Economic and Social Affairs, Population Division (2013). Trends in International Migrant Stock: The 2013 Revision (United Nations database, POP/DB/MIG/Stock/Rev.2013). See: [www.unmigration.org](http://www.unmigration.org)

**Migrant stock by origin (2013):** The five countries from which the largest numbers of migrants originate for the reporting country. **Source:** United Nations, Department of Economic and Social Affairs, Population Division (2013). Trends in International Migrant Stock: The 2013 Revision (United Nations database, POP/DB/MIG/Stock/Rev.2013).

**Migrant stock by destination (2013):** The five countries in which the largest numbers of migrants originating from reporting country reside. **Source:** United Nations, Department of Economic and Social Affairs, Population Division (2013). Trends in International Migrant Stock: The 2013 Revision (United Nations database, POP/DB/MIG/Stock/Rev.2013).

**Refugee population by origin (end 2012):** Persons by country of origin who are recognized as refugees under the 1951 Convention relating to the Status of Refugees and its 1967 Protocol or under the 1969 Organization of African Unity Convention Governing the Specific Aspects of Refugee Problems in Africa; those granted refugee status in accordance with the United Nations High Commissioner for Refugees (UNHCR) Statute; those granted humanitarian status or temporary protection by the State in which they find themselves; those in refugee-like situations; and Palestinian refugees registered with UNRWA. **Source:** UNHCR (2013). 2012 Global Trends: Refugees, Asylum-seekers, Returnees, Internally Displaced and Stateless Persons. See: [www.unhcr.org/statistics](http://www.unhcr.org/statistics).

**Refugee population (destination) (end 2012):** Persons by country of destination who are recognized as refugees under the 1951 Convention relating to the Status of Refugees and its 1967 Protocol or under the 1969 Organization of African Unity Convention Governing the Specific Aspects of Refugee Problems in Africa; those granted refugee status in accordance with the United Nations High Commissioner for Refugees (UNHCR) Statute; those granted humanitarian status or temporary protection by the State in which they find themselves; those in refugee-like situations; and Palestinian refugees registered with UNRWA. **Sources:** UNHCR (2013). 2012 Global Trends: Refugees, Asylum-seekers, Returnees, Internally Displaced and Stateless Persons. See: [www.unhcr.org/statistics](http://www.unhcr.org/statistics).

**Tertiary students:** Student population by **country of origin and destination** enrolled in programmes with an educational content more advanced than what is offered at ISCED levels 3 and 4. The first stage of tertiary education, ISCED level 5, covers level 5A, composed of largely theoretically based programmes intended to provide sufficient qualifications for gaining entry to advanced research programmes and professions with high skill requirements; and level 5B, where programmes are generally more practical, technical and/or occupationally specific. The second stage of tertiary education, ISCED level 6, comprises programmes devoted to advanced study and original research, and leading to the award of an advanced research qualification. **Source:** United Nations Educational, Scientific and Cultural Organization. Institute for Statistics (2012). <http://stats.uis.unesco.org>