

# Guinea

## MIGRATION PROFILES

### Part I. Global legal instruments related to international migration

#### States parties to United Nations legal instruments

**Year ratified:**

-	1949 ILO Migration for Employment Convention
1965	1951 Refugee Convention
1968	1967 Refugee Protocol
1978	1975 ILO Migrant Workers Convention

**Year ratified:**

1990	1989 Conv. on the Rights of the Child
2000	1990 UN Migrant Workers Convention
2004	2000 Human Trafficking Protocol
2005	2000 Migrant Smuggling Protocol

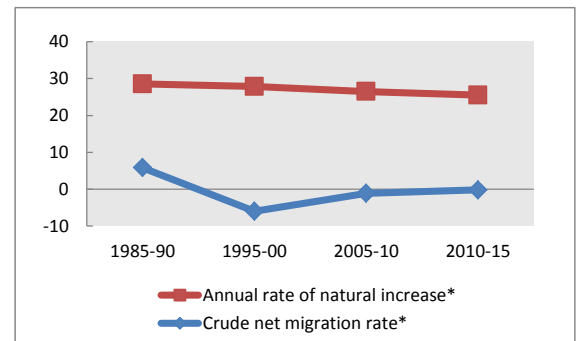
### Part II. Population indicators

#### Population estimates

	1990	2000	2010	2013
Males ('000)	2 977	4 355	5 444	5 883
Females ('000)	3 043	4 391	5 432	5 863
Total ('000)	6 020	8 746	10 876	11 745
Percentage urban population	28	31	35	36
Percentage rural population	72	69	65	64

	1985-90	1995-00	2005-10	2010-15
Average annual rate of change	3.45	2.20	2.55	2.54
Annual rate of natural increase*	28.53	27.86	26.51	25.52
Crude net migration rate*	5.86	-5.94	-1.09	-0.17
Total net migration ('000)	162	-246	-56	-10

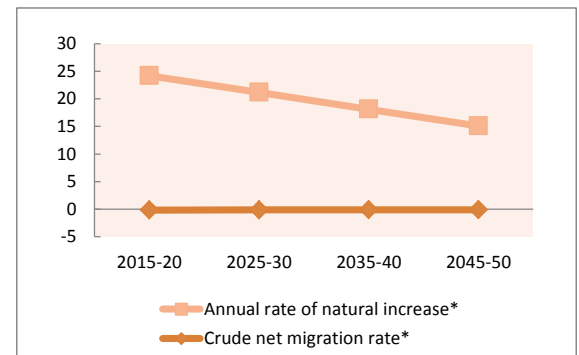
\* Per 1,000 population



#### Projected change in total population by component (x 1000)

	2015-20	2025-30	2035-40	2045-50
Total population at end of period	13 927	17 322	20 898	24 466
Population change during period	1579	1732	1802	1769
Annual rate of natural increase*	24.19	21.18	18.13	15.09
Crude net migration rate*	-0.15	-0.12	-0.10	-0.09

\* Per 1,000 population



#### Projected change in working-age (15-64) population (x 1000)

	2015-20	2025-30	2035-40	2045-50
Medium variant	1024	1261	1384	1359
Zero-migration variant	1030	1269	1395	1371
Difference	-7	-9	-11	-12

### Part III. Development indicators

#### Development indicators (years are approximate for some indicators / countries)

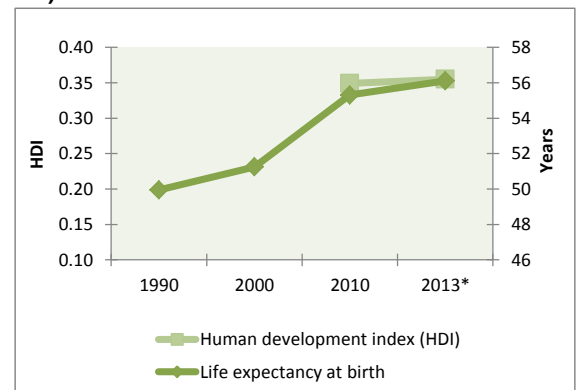
	1990	2000	2010	2013*
Life expectancy at birth	50.0	51.3	55.3	56.1
Adult literacy rate (ages 15 and older)	..	29.7	25.3	..
Combined gross enrolment ratio in education (per cent)	19.3	40.4	52.8	56.7
GDP per capita (PPP in thousands of US dollars)	617	765	997	1 069
Human development index (HDI)	..	..	0.35	0.36

\* 2013 or latest available

#### Remittances (years are approximate for some indicators / countries)

	1990	2000	2010	2012*
Inflows (millions of US dollars)	..	1	60	75
Outflows (millions of US dollars)	20	27	43	43
Inflows as a share of GDP (%)	..	0.0	1.3	1.1

\* Estimate



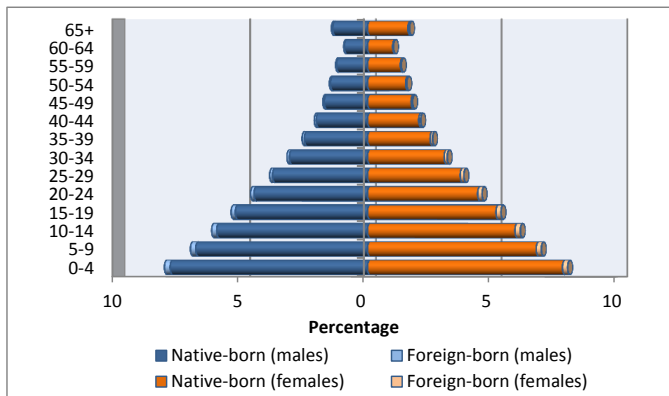
# Guinea

## Part IV. International migrant stocks

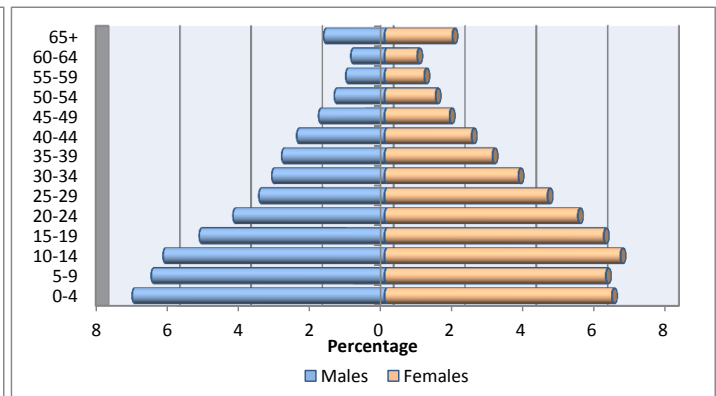
### International migrant stock by age and sex

	1990			2000			2013		
	Male	Female	Total	Male	Female	Total	Male	Female	Total
0-4	9 203	8 132	17 335	27 298	25 841	53 139	26 797	24 113	50 910
5-9	11 983	10 809	22 792	35 369	34 200	69 569	24 773	23 474	48 247
10-14	14 157	13 281	27 438	40 550	40 831	81 381	23 514	25 017	48 531
15-19	14 841	16 108	30 949	41 925	49 121	91 046	19 669	23 249	42 918
20-24	13 662	16 887	30 549	38 004	51 002	89 006	16 084	20 504	36 588
25-29	13 250	16 199	29 449	37 006	49 095	86 101	13 334	17 292	30 626
30-34	10 994	12 284	23 278	30 656	37 017	67 673	11 958	14 198	26 156
35-39	7 730	7 567	15 297	21 748	22 889	44 637	10 910	11 447	22 357
40-44	5 126	4 391	9 517	14 399	13 201	27 600	9 315	9 240	18 555
45-49	4 195	3 546	7 741	11 686	10 569	22 255	6 989	6 894	13 883
50-54	3 750	3 347	7 097	10 469	10 012	20 481	5 319	5 405	10 724
55-59	3 200	3 076	6 276	8 856	9 147	18 003	4 108	4 208	8 316
60-64	3 106	3 009	6 115	8 660	9 021	17 681	3 565	3 455	7 020
65+	3 676	3 612	7 288	10 351	10 931	21 282	6 444	7 189	13 633
<b>Total</b>	<b>118 873</b>	<b>122 248</b>	<b>241 121</b>	<b>336 977</b>	<b>372 877</b>	<b>709 854</b>	<b>182 779</b>	<b>195 685</b>	<b>378 464</b>

Total population by age and sex, 2013



Migrant stock by age and sex, 2013



### Migrant stock by origin (2013)

Top 5 countries or areas of origin	Total
Sierra Leone	226 415
Liberia	118 353
Mali	9 873
Côte d'Ivoire	6 710
Senegal	4 299
<b>Total</b>	<b>365 650</b>

### Migrant stock by destination (2013)

Top 5 countries or areas of destination	Total
Côte d'Ivoire	106 803
Sierra Leone	61 510
Senegal	39 594
Liberia	37 026
Gambia	34 330
<b>Total</b>	<b>279 263</b>

### Refugee population by origin (end 2012)

Top 5 countries or areas of origin	Total
Côte d'Ivoire	6 552
<b>Total</b>	<b>6 552</b>

### Refugee population by destination (end 2012)

Top 5 countries or areas of destination	Total
<b>Total</b>	

### Tertiary students by origin (2013)

Top 5 countries or areas of origin	Total
<b>Total</b>	

### Tertiary students by destination (2013)

Top 5 countries or areas of destination	Total
France	3 945
Saudi Arabia	208
Spain	187
United States of America	136
Cuba	97
<b>Total</b>	<b>4 573</b>

## DEFINITIONS AND SOURCES

**States parties to United Nations legal instruments** : Indicates whether a country has ratified the relevant international instrument and if so, the year of ratification. The relevant instruments are the 1951 Convention relating to the Status of Refugees; the 1967 Protocol relating to the Status of Refugees, and the 1990 International Convention on the Protection of the Rights of All Migrant Workers and Members of their Families. In addition, two Protocols relevant to international migration supplement the United Nations Convention against Transnational Organized Crime, namely the 2000 Protocol to Prevent, Suppress and Punish Trafficking in Persons, Especially Women and Children and the 2000 Protocol against the Smuggling of Migrants by Land, Sea and Air. **Source** : United Nations Treaty Collection. See: <http://treaties.un.org>.

**Males**: De facto male population as of 1 July of the year indicated. Data are presented in thousands. **Source**: United Nations, Department of Economic and Social Affairs, Population Division (2013). World Population Prospects: The 2012 Revision.

**Females**: De facto female population as of 1 July of the year indicated. Data are presented in thousands. **Source**: United Nations, Department of Economic and Social Affairs, Population Division (2013). World Population Prospects: The 2012 Revision.

**Total population**: De facto population in a country, area or region as of 1 July of the year indicated. Figures are presented in thousands. **Source**: United Nations, Department of Economic and Social Affairs, Population Division (2013). World Population Prospects: The 2012 Revision.

**Percentage urban population**: Urban population as a percentage of the total population. **Source**: United Nations, Department of Economic and Social Affairs, Population Division (2012). World Urbanization Prospects: The 2011 Revision.

**Percentage rural population**: Rural population as a percentage of the total population. **Source**: United Nations, Department of Economic and Social Affairs, Population Division (2012). World Urbanization Prospects: The 2011 Revision.

**Annual rate of change**: Average exponential rate of growth of the population over a given period. It is expressed as a percentage. **Source**: United Nations, Department of Economic and Social Affairs, Population Division (2013). World Population Prospects: The 2012 Revision.

**Annual rate of natural increase**: Crude birth rate minus the crude death rate. Represents the portion of population growth (or decline) determined exclusively by births and deaths. **Source**: United Nations, Department of Economic and Social Affairs, Population Division (2013). World Population Prospects: The 2012 Revision.

**Crude net migration rate**: The ratio of net migration during the year to the average population in that year. The value is expressed per 1 000 inhabitants. **Source**: United Nations, Department of Economic and Social Affairs, Population Division (2013). World Population Prospects: The 2012 Revision.

**Total net migration**: Net number of migrants, that is, the number of immigrants minus the number of emigrants. It is expressed in thousands. **Source**: United Nations, Department of Economic and Social Affairs, Population Division (2013). World Population Prospects: The 2012 Revision.

**Total population at end of period**: Total population on 30 June of the final year of the period. Data are from the medium variant (see below) of the World Population Prospects. **Source**: United Nations, Department of Economic and Social Affairs, Population Division (2013). World Population Prospects: The 2012 Revision.

**Population change during period**: Total population change over a period, that is, the difference between the population at the end of the period and that at the beginning of the period. **Source**: United Nations, Department of Economic and Social Affairs, Population Division (2013). World Population Prospects: The 2012 Revision.

**Medium variant**: The medium projection variant combines the medium fertility assumption together with normal-mortality and normal international migration assumptions and is a central reference for trends over the longer term that results from the probabilistic approach that simulates future fertility paths for each country. **Source**: United Nations, Department of Economic and Social Affairs, Population Division (2013). World Population Prospects: The 2012 Revision.

**Zero-migration variant**: Under this assumption, the medium variant is modified so that international migration for each country is set to zero starting in 2010-2015. **Source**: United Nations, Department of Economic and Social Affairs, Population Division (2013). World Population Prospects: The 2012 Revision.

**Life expectancy at birth**: Number of years a newborn infant could expect to live if prevailing patterns of age-specific mortality rates at the time of birth stay the same throughout the infant's life. **Source**: United Nations, Department of Economic and Social Affairs, Population Division (2013). World Population Prospects: The 2012 Revision.

**Adult literacy rate**: The percentage of population aged 15 years and older who can both read and write with understanding a short simple statement on his/her everyday life. Generally, 'literacy' also encompasses 'numeracy', the ability to make simple arithmetic calculations. **Source**: United Nations Educational, Scientific and Cultural Organization. Institute for Statistics (2012). <http://stats.uis.unesco.org>

**Combined gross enrolment ratio in education**: Total enrolment in a specific level of education, regardless of age, expressed as a percentage of the eligible official school-age population corresponding to the same level of education in a given school year. For the tertiary level, the population used is that of the five-year age group following on from the secondary school leaving. **Source**: United Nations Educational, Scientific and Cultural Organization. Institute for Statistics (2012). <http://stats.uis.unesco.org>

**GDP per capita (PPP in USD)**: Gross domestic product converted to international dollars using purchasing power parity rates. An international dollar has the same purchasing power over GDP as the U.S. dollar has in the United States. GDP at purchaser's prices is the sum of gross value added by all resident producers in the economy plus any product taxes and minus any subsidies not included in the value of the products. It is calculated without making deductions for depreciation of fabricated assets or for depletion and degradation of natural resources. Data are in current international dollars. **Source**: World Development Indicators - World Bank (2013).



**Human development index (HDI):** A composite measure of achievements in three basic dimensions of human development—a long and healthy life, access to education and a decent standard of living. For ease of comparability, the average value of achievements in these three dimensions is put on a scale of 0 to 1, where greater is better, and these indicators are aggregated using geometric means. **Source:** United Nations Development Program (2013). Human Development Report Office.

**Remittances:** Remittances are defined as the sum of workers' remittances, compensation of employees, and migrants' transfers. Regional aggregates were calculated by the United Nations Population Division. All data are reported in current U.S. dollars. Remittance **inflows** refer to the sum of workers' remittances, compensation of employees and migrants' transfers received by the country of enumeration, while **outflows** refer to remittance outflows by the country of enumeration. **Source:** World Bank staff calculation based on data from IMF Balance of Payments Statistics Yearbook 2012 and data releases from central banks, national statistical agencies, and World Bank country desks.

**Remittance inflows as share of GDP:** **Source:** World Bank staff calculation based on data from IMF Balance of Payments Statistics Yearbook 2012 and data releases from central banks, national statistical agencies, and World Bank country desks.

**International migrant stock by age and sex:** The mid-year (1 July) estimate of the number of people living in a country or area other than that in which they were born. If the number of foreign-born was not available, the estimate refers to the number of people living in a country other than that of their citizenship. **Source:** United Nations, Department of Economic and Social Affairs, Population Division (2013). Trends in International Migrant Stock: The 2013 Revision (United Nations database, POP/DB/MIG/Stock/Rev.2013). See: [www.unmigration.org](http://www.unmigration.org)

**Migrant stock by origin (2013):** The five countries from which the largest numbers of migrants originate for the reporting country. **Source:** United Nations, Department of Economic and Social Affairs, Population Division (2013). Trends in International Migrant Stock: The 2013 Revision (United Nations database, POP/DB/MIG/Stock/Rev.2013).

**Migrant stock by destination (2013):** The five countries in which the largest numbers of migrants originating from reporting country reside. **Source:** United Nations, Department of Economic and Social Affairs, Population Division (2013). Trends in International Migrant Stock: The 2013 Revision (United Nations database, POP/DB/MIG/Stock/Rev.2013).

**Refugee population by origin (end 2012):** Persons by country of origin who are recognized as refugees under the 1951 Convention relating to the Status of Refugees and its 1967 Protocol or under the 1969 Organization of African Unity Convention Governing the Specific Aspects of Refugee Problems in Africa; those granted refugee status in accordance with the United Nations High Commissioner for Refugees (UNHCR) Statute; those granted humanitarian status or temporary protection by the State in which they find themselves; those in refugee-like situations; and Palestinian refugees registered with UNRWA. **Source:** UNHCR (2013). 2012 Global Trends: Refugees, Asylum-seekers, Returnees, Internally Displaced and Stateless Persons. See: [www.unhcr.org/statistics](http://www.unhcr.org/statistics).

**Refugee population (destination) (end 2012):** Persons by country of destination who are recognized as refugees under the 1951 Convention relating to the Status of Refugees and its 1967 Protocol or under the 1969 Organization of African Unity Convention Governing the Specific Aspects of Refugee Problems in Africa; those granted refugee status in accordance with the United Nations High Commissioner for Refugees (UNHCR) Statute; those granted humanitarian status or temporary protection by the State in which they find themselves; those in refugee-like situations; and Palestinian refugees registered with UNRWA. **Sources:** UNHCR (2013). 2012 Global Trends: Refugees, Asylum-seekers, Returnees, Internally Displaced and Stateless Persons. See: [www.unhcr.org/statistics](http://www.unhcr.org/statistics).

**Tertiary students:** Student population by **country of origin and destination** enrolled in programmes with an educational content more advanced than what is offered at ISCED levels 3 and 4. The first stage of tertiary education, ISCED level 5, covers level 5A, composed of largely theoretically based programmes intended to provide sufficient qualifications for gaining entry to advanced research programmes and professions with high skill requirements; and level 5B, where programmes are generally more practical, technical and/or occupationally specific. The second stage of tertiary education, ISCED level 6, comprises programmes devoted to advanced study and original research, and leading to the award of an advanced research qualification. **Source:** United Nations Educational, Scientific and Cultural Organization. Institute for Statistics (2012). <http://stats.uis.unesco.org>